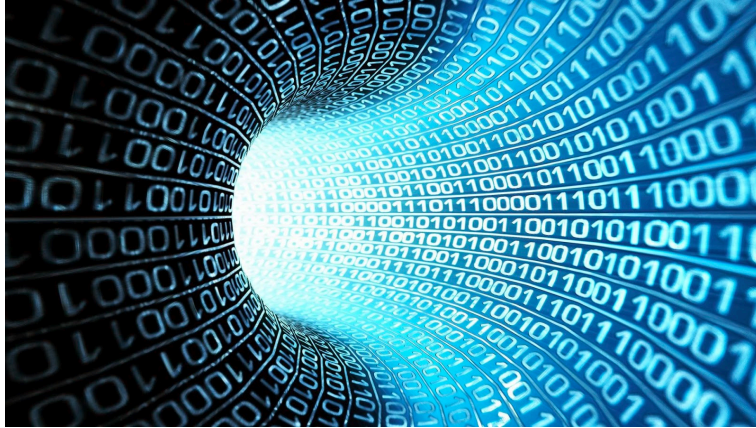
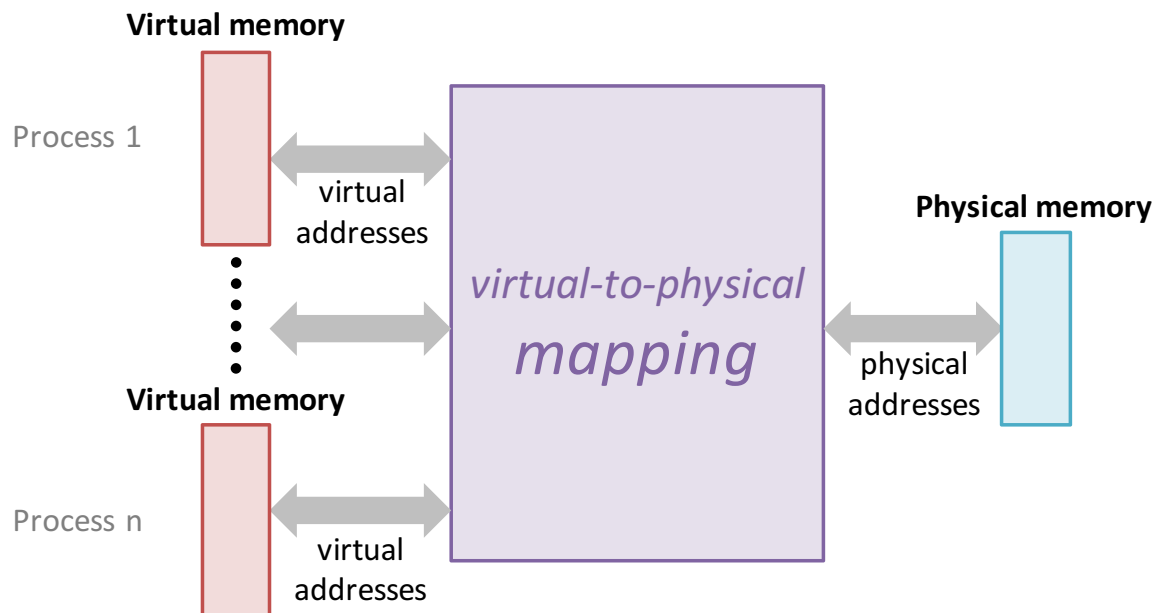


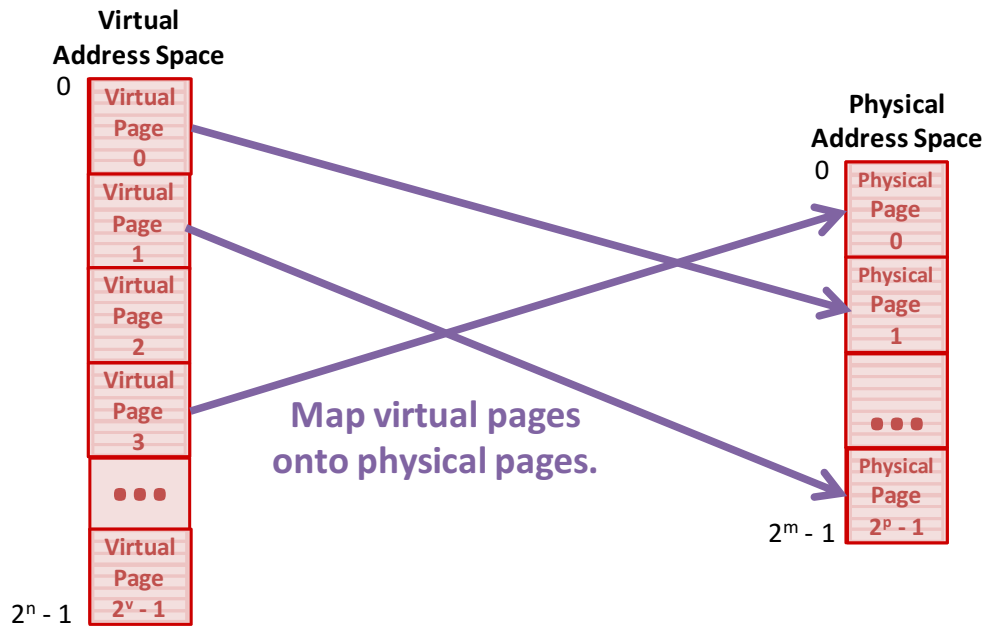
Virtual Memory (and a bit more...)



Virtual and Physical Addresses

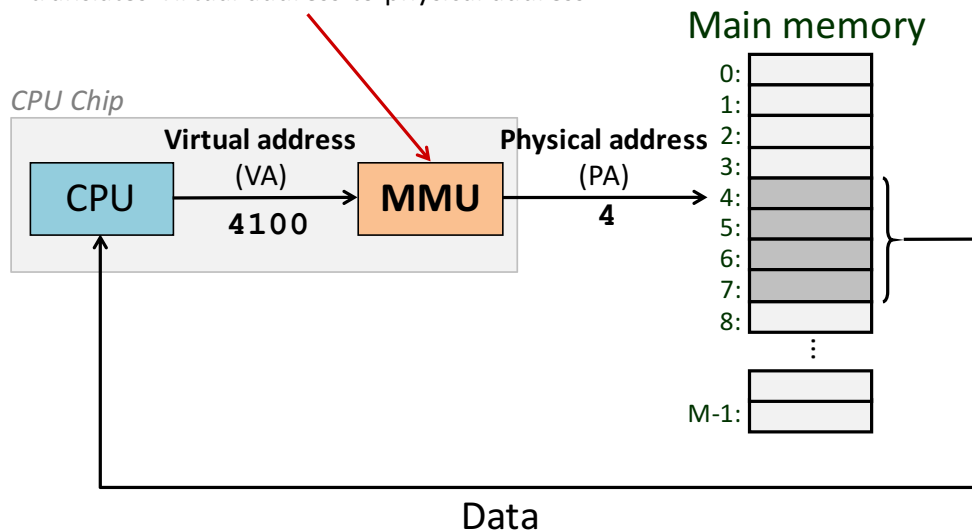


Memory Pages

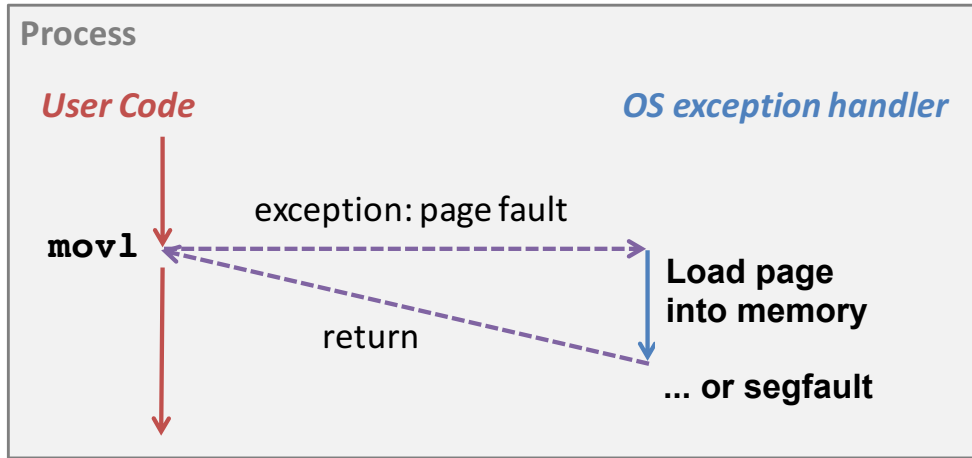


Address Translation

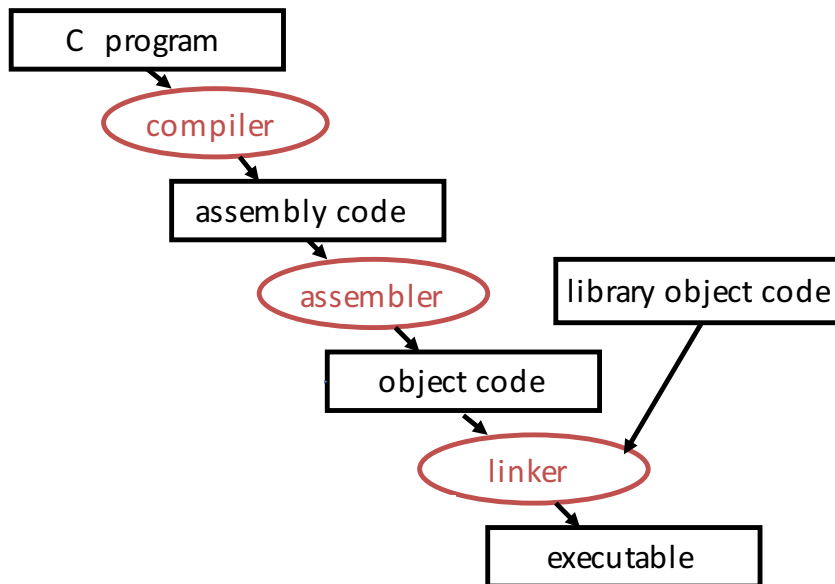
Memory Management Unit
translates virtual address to physical address



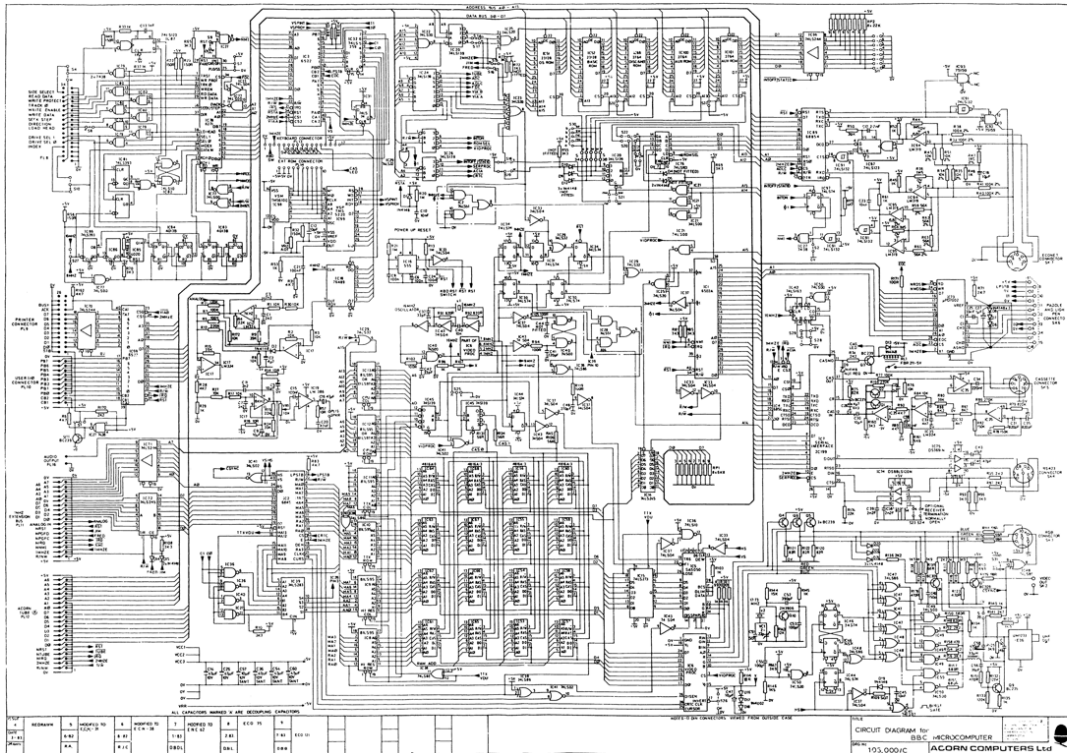
Page Fault



Program Generation Workflow



Circuits and Digital Logic



Bowdoin

Sean Barker

7

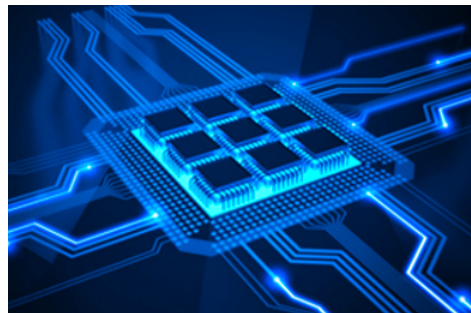
Big Ideas in Systems

Abstraction

Representation

Performance

Security + Reliability



Bowdoin

Sean Barker

8