

Laura Toma

Bowdoin College, USA

- undergraduate institution
- 1800 students



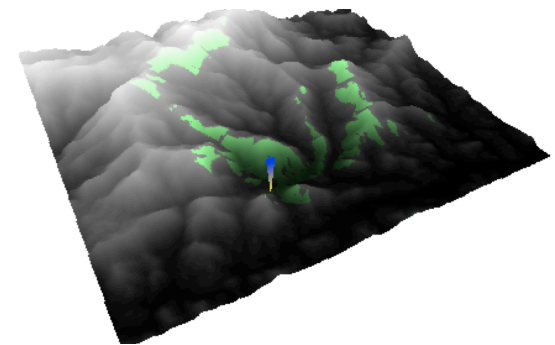
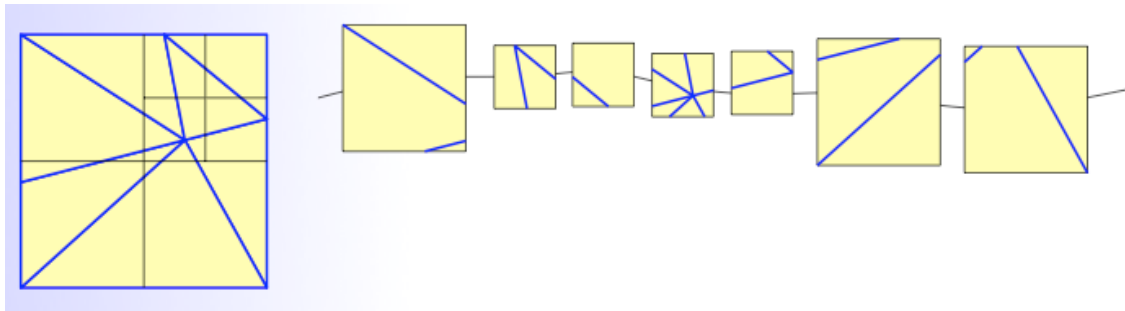
Research

IO-efficient algorithms/Algorithm engineering for large data

- PhD 2003, Duke University
- Goal: work with undergraduates

Recently:

- Computing an edge quadtree in external memory
[SEA 2013]



- Computing visibility on terrains in external memory
[GIS 2013]